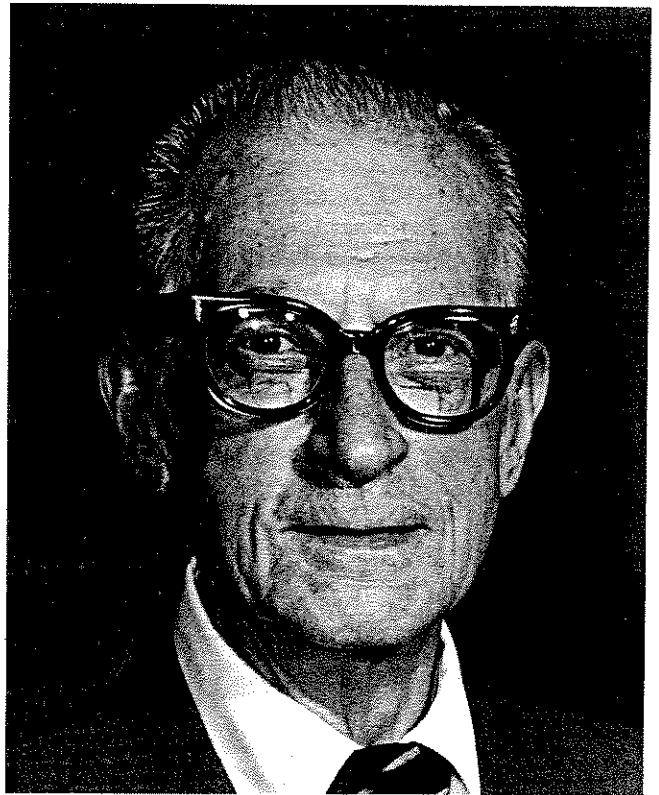


# I.A.M.G.

## News Letter

With the death on August 18, 1979, of Bill Krumbein, the IAMG not only lost one of its founding officers, but science lost one who has frequently been referred to as the father of mathematical geology. Born at Beaver Falls, Pennsylvania, in January 1902, Krumbein earned three degrees at the University of Chicago. In 1926, he completed the Ph.B. in Business Administration but his interests soon switched to the geological sciences, so that his M.S. and Ph.D. in geology followed in 1930 and 1932. Little time was lost in initiating his distinguished contributions to mathematical geology, because, in Vol. 2 of the Journal of Sedimentary Petrology for 1932 appeared the first two of his 132 publications. These papers were entitled "A history of the principles and methods of mechanical analysis" and "The mechanical analysis of fine-grained sediments." Krumbein had initiated his succession of articles and books that were destined to have a profound and permanent impact on studies of sediments, sedimentation, and stratigraphy.



William Christian Krumbein  
1902 - 1979

William Krumbein moved from Instructor to Associate Professor at the University of Chicago between 1933 and 1945. During the War he served with the Beach Erosion Board of the U.S. Corps of Engineers in Washington, D.C. (1942-45) and then briefly joined the Gulf Research and Development Co. In 1946, Krumbein became Professor of Geology at Northwestern University, and, from 1960 until his mandatory retirement from Northwestern in 1970, he was William Deering Professor of Geological Sciences. After graduating to the status of Emeritus Professor, Bill actively continued his distinguished research publications; his most recent paper in the Journal of the International Association for Mathematical Geology (Vol. 8, p. 429-261) was "Topological properties of disjoint channel networks within enclosed regions" (written jointly with Michael F. Dacey). Fittingly, his last paper on this topic appeared in the Syracuse University Geology Contributions (1978, No. 5, p. 37-56), shortly before he was awarded an honorary D.Sc. by Syracuse University in the spring of 1979.

During a memorial service on October 23, 1979, in the Jeanne Vail Chapel at Northwestern University, Larry Sloss spoke of the large company who "...will recall Bill as a master teacher, totally devoted to the transmittal of knowledge to his students--with more than occasional diversions of effort for the benefit of his professional colleagues. It will be said of many of us academics that we suffer fools badly and with little grace, but Bill could find some well-concealed good in almost everyone who came within his intellectual sphere of influence -- he labored mightily (and gracefully) for the scholarly salvation of those who, but for him, would sink to scholastic purgatory. A more lasting tribute is represented by that smaller cadre of gifted and motivated students that Bill used, with skill, patience, and humor, as amplifying extensions of his own fertile mind. Constitutionally rejecting 'conventional wisdom', he continually pursued innovative methods whereby the natural phenomena of geology could be expressed with mathematical rigor." Sloss concluded by saying, "Some decades ago, when both Bill and I had time to read controversial novels, Branch Cabell's character, Jurgen, visited a spectrum of heavens, each a special place perceived as appropriate for a particular individual. Were it possible to enter Bill Krumbein's heaven, I think I know what we would find--a cozy office, not too large, not too small, with a view of a wave-swept beach; a comfortably cluttered desk bearing a few manuscripts, some near completion, others in proof; a multi-function programmable calculator; an electronic typewriter-cum-word processor; a full computer terminal; and nearby, a discreet little table with a pitcher of extra-cold, extra-dry martinis. Here, Bill, we wish you well."

--E.H.T. Whitten, IAMG Secretary General



DIRECTORY OF NORTH AMERICAN GEOSCIENTISTS in Computers, Mathematics,  
and Statistical Methods

Because of the rapid changes occurring in mathematical geology, there is a need for a directory of geoscientists working with computers, mathematics, and statistical methods in North America. MGUS, the Mathematical Geologists of the United States, a regional organization of the International Association for Mathematical Geology, will produce such a directory, with a June 1980 publication date. We think the directory will be useful to all who have an interest in our interdisciplinary work. The sales of advertising in the directory will cover printing costs, so it will be possible to send a gratis copy of the directory to each person who provides information and a photograph.

Because of your professional activities you may wish to be included in this directory. If so, please complete the information form opposite. To be included in the directory, you must return the requested information together with a recent photo (passport size) of yourself no later than January 1, 1980, to:

MGUS  
Department of Geology  
University of Illinois  
Urbana, Illinois 61801  
USA



The directory will be a valuable reference in the years to come. Don't procrastinate, get your picture and complete the information form and put them in the mail!



# Notice!



1980 DUES NOTICE

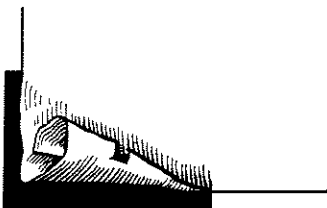
INTERNATIONAL ASSOCIATION FOR MATHEMATICAL GEOLOGY

The Association has held member's dues at \$15 per year for the past 10 years, in spite of inflation, rising postal rates, and increases in printing costs, not to mention expansion of the Journal of MATHEMATICAL GEOLOGY from a quarterly to a bimonthly.

Our contract with the publishers of MATHEMATICAL GEOLOGY, Plenum Publishing Corp., allows for inflationary increases in the member's price of the Journal, based on increases in the US cost of living index over two years. The first increase occurred in 1978; however, the Association elected to absorb this cost rather than pass it on to members at that time. Now the inexorable laws of finance have caught up with the IAMG, and DUES MUST GO UP.

Dues for 1980 will be \$18.00 US with a subscription to the Journal of MATHEMATICAL GEOLOGY; \$33.00 US with a subscription to COMPUTERS & GEOSCIENCES; and \$48.00 US with subscriptions to both journals.

Remember that dues are due BEFORE JANUARY 1, 1980. Send the form opposite with your dues now!



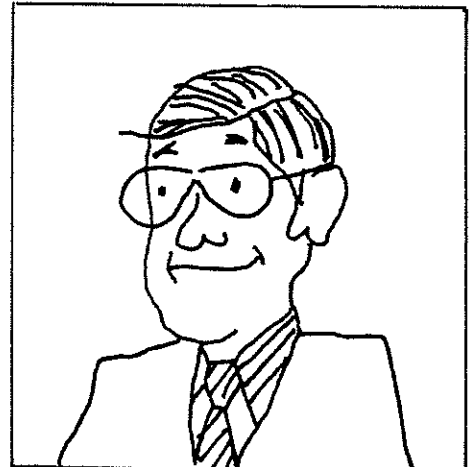
for the  
**DIRECTORY OF NORTH AMERICAN GEOSCIENTISTS in Computers, Mathematics,  
 and Statistical Methods**

Name \_\_\_\_\_ Subject \_\_\_\_\_ School \_\_\_\_\_ Year \_\_\_\_\_  
 Business Address \_\_\_\_\_ Degrees: \_\_\_\_\_  
 \_\_\_\_\_  
 \_\_\_\_\_

Business Phone: Area \_\_\_\_\_ - \_\_\_\_\_ - \_\_\_\_\_

Professional Specialities (list as many as appropriate)  
 \_\_\_\_\_  
 \_\_\_\_\_  
 \_\_\_\_\_

Professional Affiliations (list chronologically since college)  
 \_\_\_\_\_  
 \_\_\_\_\_  
 \_\_\_\_\_



Attach a recent black and white photograph of yourself. Lightly print your name and address on the back so we can keep all the Smiths and Joneses straight!

----- Cut Here -----

**★ 1980 MEMBERSHIP RENEWAL/APPLICATION FORM ★**  
 INTERNATIONAL ASSOCIATION FOR MATHEMATICAL GEOLOGY

• **1980 I.A.M.G. DUES** • Send Remittance to: International Assn. for Mathematical Geology  
*Mail your check, money order, or UNESCO coupons, together with this form, today!* Dr. John C. Davis, Western Treasurer  
 1930 Avenue "A", Campus West  
 Lawrence, Kansas, USA 66044

- ★ \$18.00 US  
Includes Jour. of  
MATH. GEOLOGY ★
- ★ \$33.00 US  
Includes COMP. &  
GEOSCIENCES ★
- ★ \$48.00 US  
Includes MATH. GEOLOGY  
and COMP. & GEOSCIENCES ★

Enclosed are my 1980 dues in the amount of \$ \_\_\_\_\_ US. [Members outside the US add \$2.50 for Airmail delivery of the NEWS LETTER, if desired.]

[Complete the following. Please PRINT all information.]

(Name) \_\_\_\_\_ (Organization) \_\_\_\_\_  
 (Street Address/Postal Box) \_\_\_\_\_ (City) \_\_\_\_\_ (State) \_\_\_\_\_  
 (Country) \_\_\_\_\_ (Postal/ZIP Code) \_\_\_\_\_

*The IAMG, which strives to promote the development and application of quantitative methods in the Earth sciences, presently includes over 450 members. It is an affiliate of the International Geological Union and the International Statistical Institute. IAMG Regional Organizations are also affiliated with numerous national societies, including the Geological Society of London, the Geological Society of America, and the Canadian Society of Petroleum Geologists.*

## CALL FOR PAPERS

The Geological Information Group/Geological Society of London Annual General Meeting will be held March 19, 1980, at Flett Theatre, Institute of Geological Sciences, Exhibition Road, London SW7 2DE. Entitled "Databanks and Databases in Geology," the meeting is intended to highlight some of the implications of the use of such systems as well as to describe currently available systems and their probable developments. It is hoped to mount practical demonstrations of some currently available systems as well as displays, and to publish the papers subsequently.

Contributions of 20-30 minutes are invited. Abstracts of 100-500 words, and outlines of proposed demonstrations and displays together with requests for further information should be addressed to Miss Anne Ramsden (Mineral Intelligence Unit) or Dr. M. F. Horder (National Geochemical Data Bank) at the Institute of Geological Sciences (address above) by January 1, 1980. Authors selected to present papers will be informed by February 1, 1980.

### GROUP ON STATISTICS IN THE EARTH SCIENCES

The above-named group has been formed with the following membership: Prof. O. Barndorff-Nielsen (Univ. Aarhus, Denmark), Prof. J. Briden (Univ. Leeds, UK), Prof. K. Cehak (Univ. Vienna, Austria), Dr. I. Clark (Imperial College, UK), Dr. D. G. Krige (Anglo-

Transvaal Consolidated Investment Co., South Africa), Prof. C. Lomnitz (National Univ., Mexico), Prof. K. V. Mardia (Univ. Leeds, UK), Prof. A. Marechal (Centre de Geostatistique, France), Prof. D. F. Merriam (Syracuse Univ., USA), Dr. R. E. Miles (Australian National Univ., Australia), Prof. R. A. Reyment (Uppsala Univ., Sweden), Dr. B. D. Ripley (Imperial College, UK), Mr. A. G. Royle (Univ. Leeds, UK), Prof. P. Switzer (Stanford Univ., USA), Prof. D. Vere-Jones (Victoria Univ. of Wellington, New Zealand), Prof. G. S. Watson (Princeton Univ., USA). The purpose of the group is to stimulate interest and research in statistics in the Earth sciences, which is to be interpreted broadly to include geology, mining, material sciences, hydrology, oceanography, atmospheric sciences, etc.

A newsletter will be published from time to time to exchange information on activities in this field. The newsletter will include details of and reports on meetings, abstracts, offers of pre-/reprints of papers, and details of relevant courses.

Material for inclusion in the newsletter should be sent to Prof. K. V. Mardia, Dept. of Statistics, The University of Leeds, Leeds LS2 9JT, England. The first issue, STATISTICS IN THE EARTH SCIENCES--News & Notes No. 1 (Sept. 1979) has appeared. If you wish to be on the mailing list, send your request to Prof. Mardia.



★ REMEMBER! -- 1980 DUES MUST BE SENT BEFORE JAN. 1, 1980! ★

*The I.A.M.G. News Letter is made possible by a grant from the Kansas Geological Survey.*

I.A.M.G.  
KANSAS GEOLOGICAL SURVEY  
1930 Avenue "A" Campus West  
University of Kansas  
Lawrence, Kansas 66044

**no. 23** 